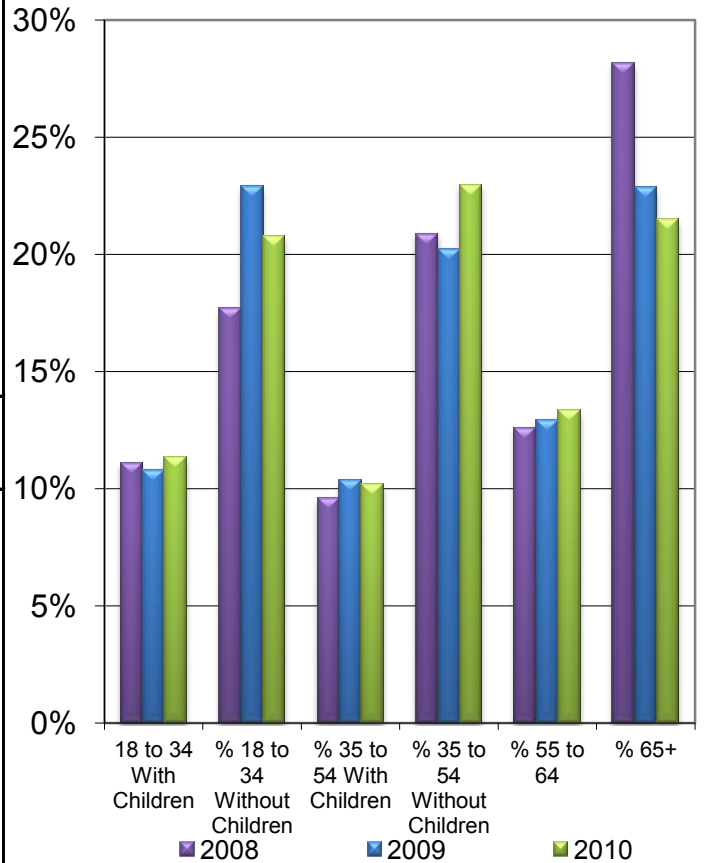
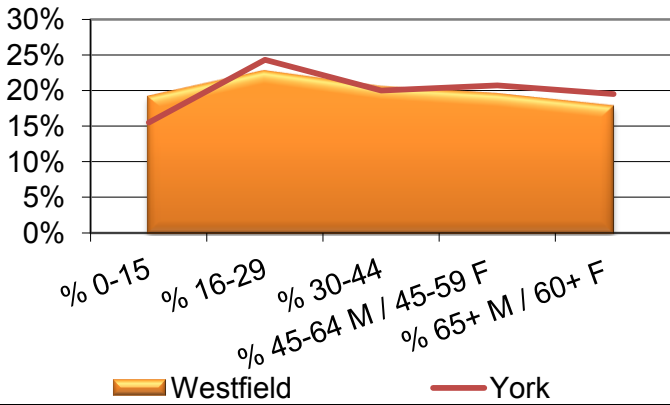


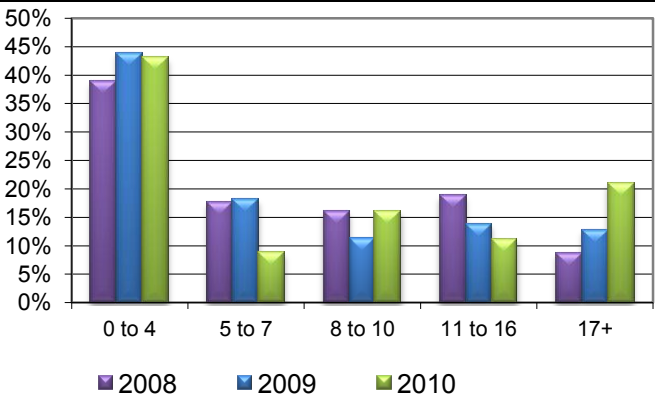
**% of Population by age
(Census 2010 mid year estimate for 2009)**

**Lifestyle of Head of Household
(Acxiom Survey 2010)**

Population of Westfield Ward is 14,335 (2009) which is 7.21% of York



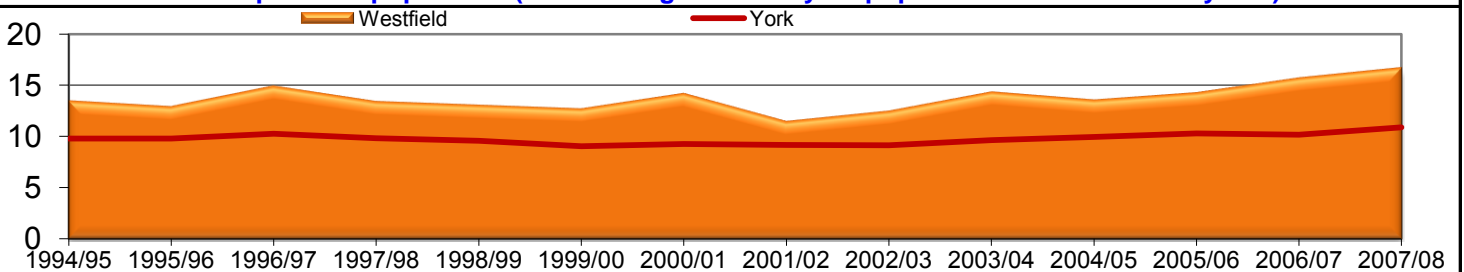
**% of Households with Children by Youngest Child Age
(Acxiom Survey 2010)**



**Indices of Multiple Deprivation (Ranking of 7932 wards nationally) -
Higher is less deprived, lower is more deprived**

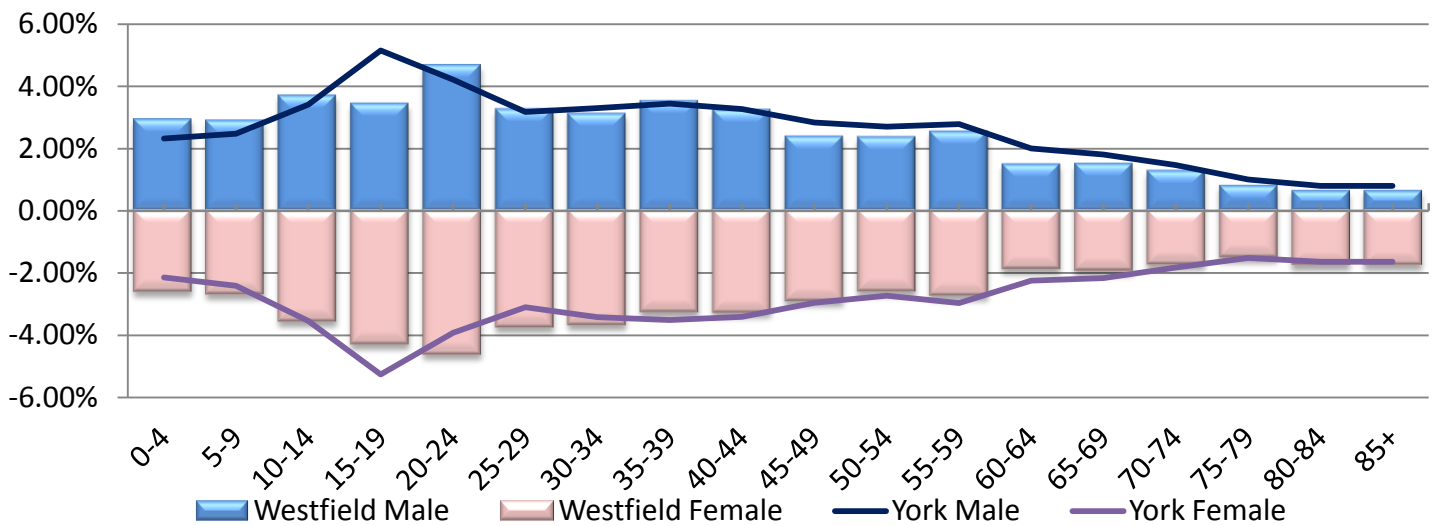


Births per 1000 population (ONS - using 2008 mid year population estimate for all years)

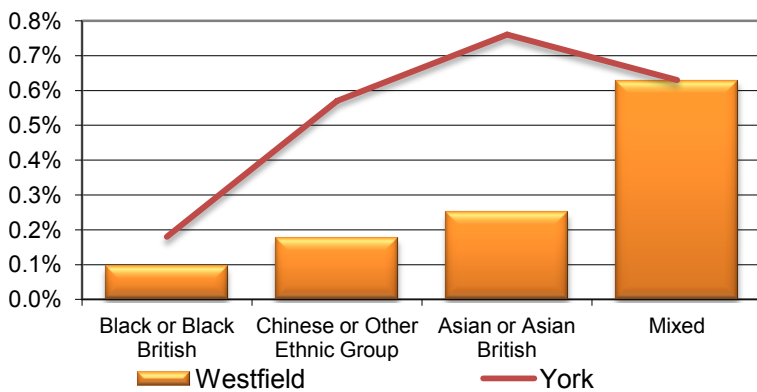


What is this saying about Westfield ward in general?

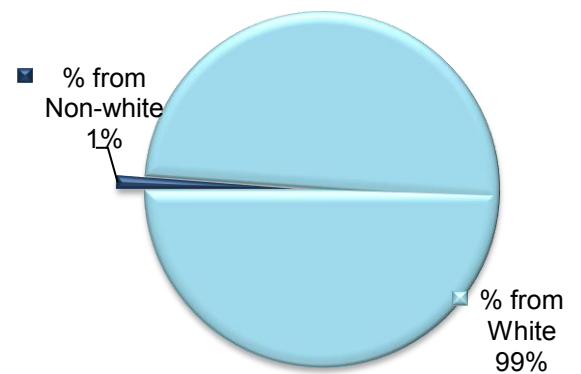
Population by Age and Gender (Based on ONS 2009 mid year estimates, 2010 not available by ward)



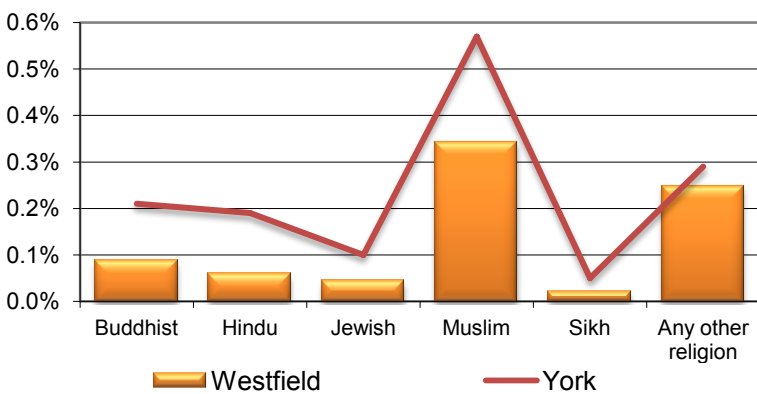
Ethnicity Groups (non White Groups - 2001 Census)



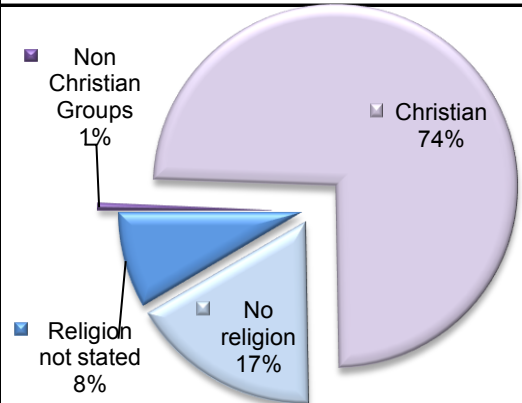
Ethnicity (2001 Census)



Religious Groups (excluding Christian, No Religion or not stated - 2001 Census)

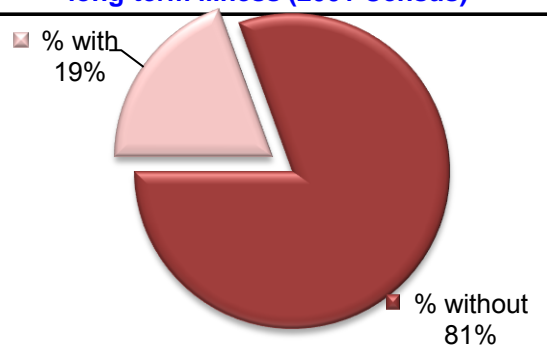


Religious Groups (2001 Census)

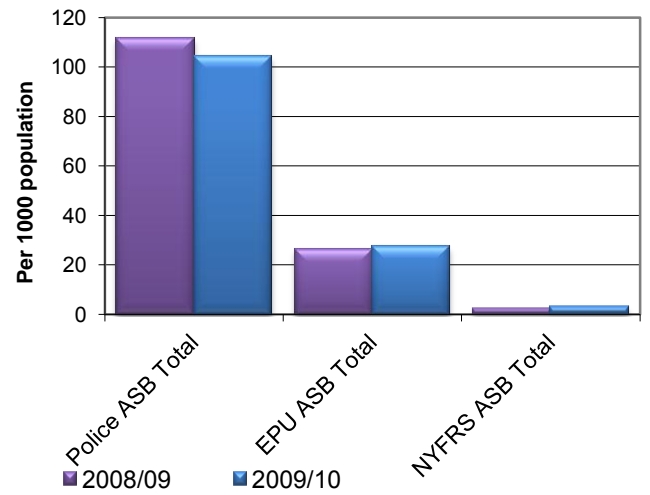
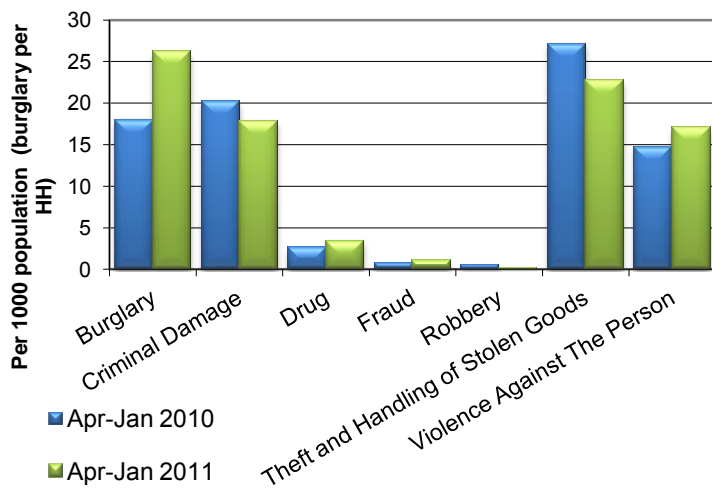


What is this saying about the equalities of Westfield ward?

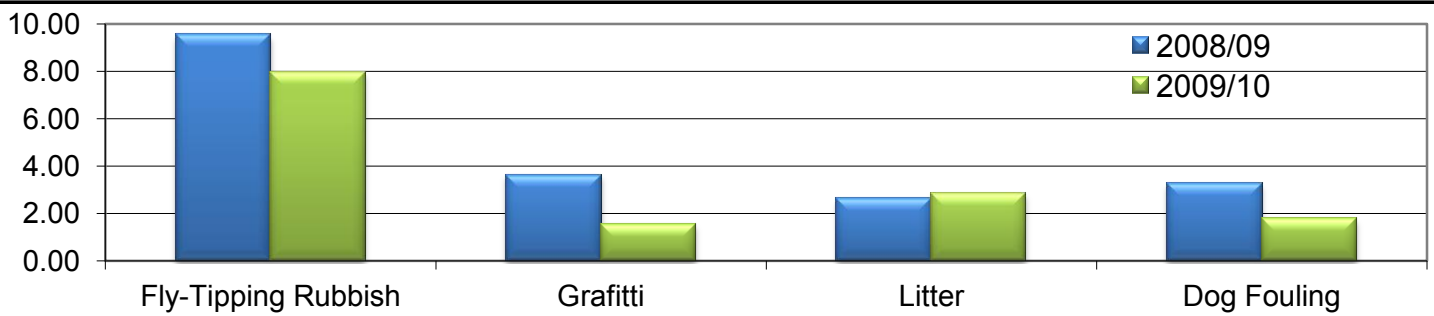
Disability: With a limiting long-term illness (2001 Census)



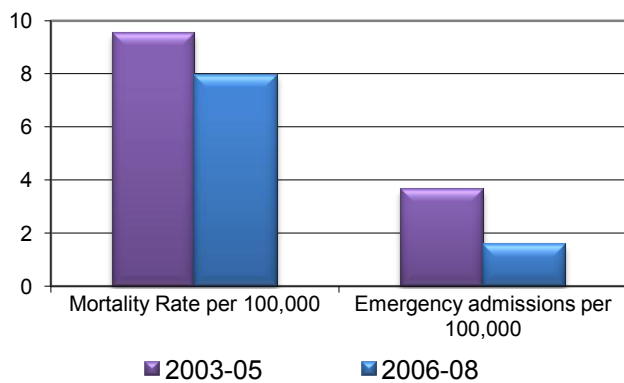
Crime Rate and Anti Social Behaviour per 1000 Population (Safer York Partnership)



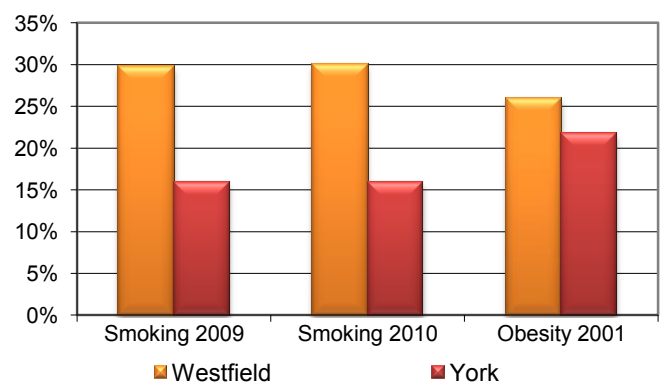
Fly tipping, Graffiti, Litter and Dog fouling crimes per 1000 population (Safer York Partnership)



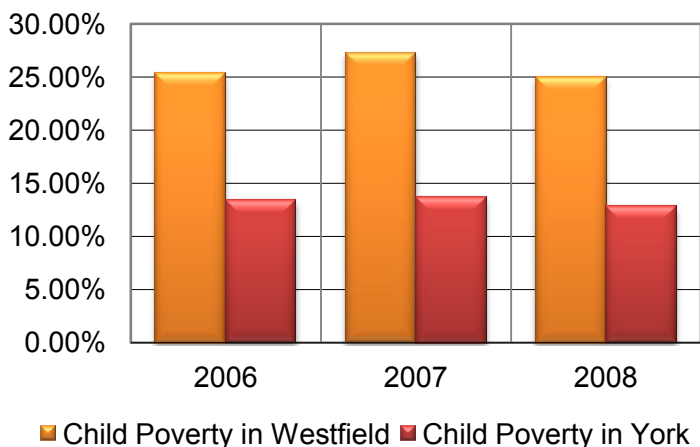
Mortality and Emergency Admissions (PCT)



Smoking and Obesity (Acxiom Survey and Census)

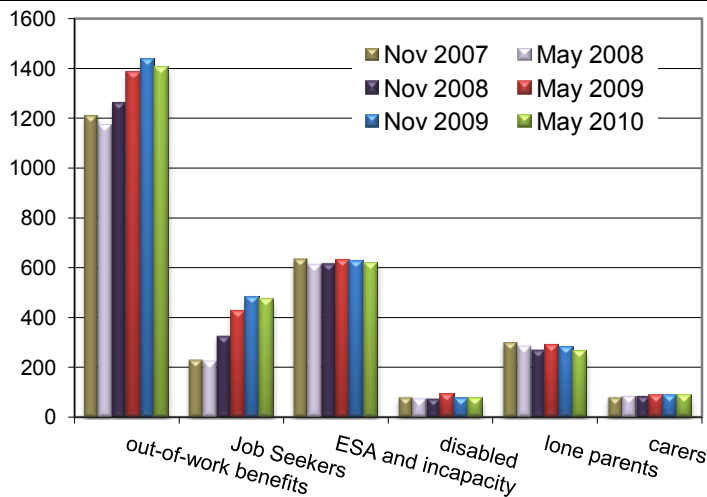


% of children in Child Poverty (CTC and JSA)

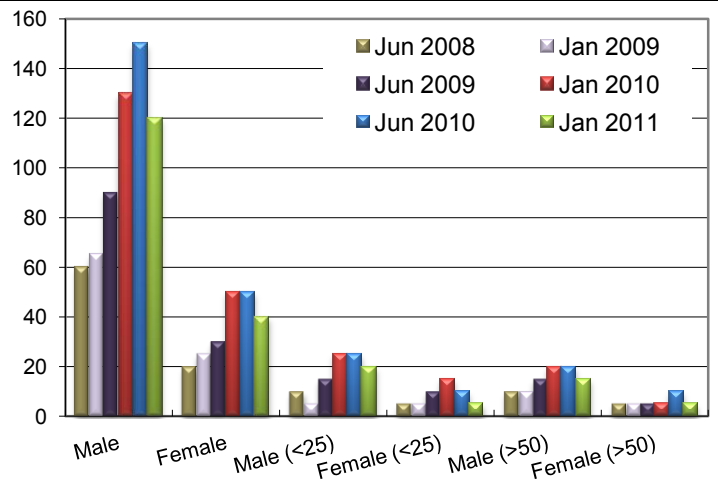


What is this saying about the H&S of Westfield ward?

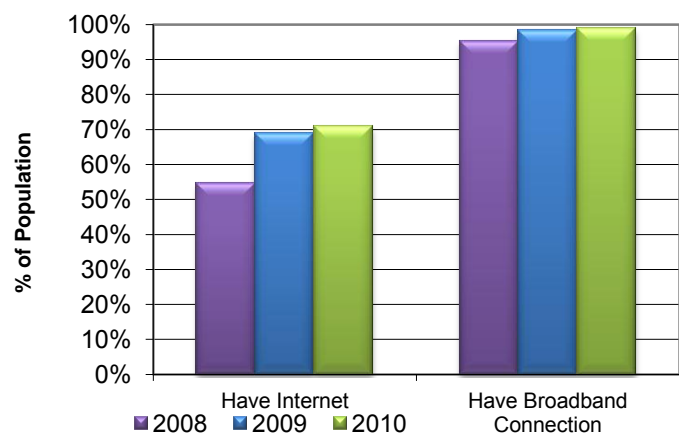
Benefits (DWP)



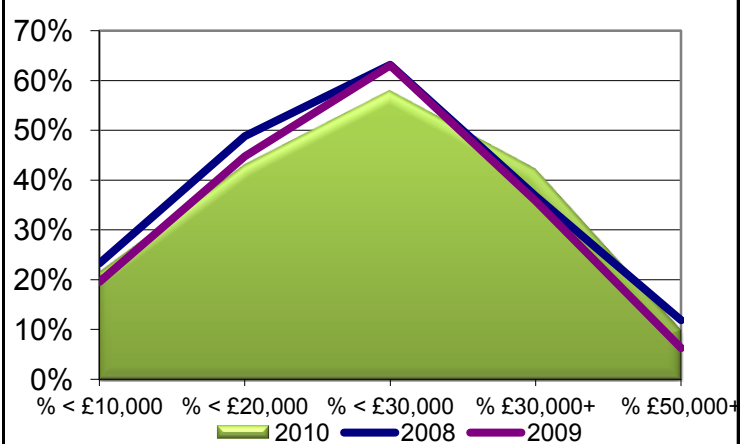
Long Term Unemployment (% of JS claiming over 12 months)



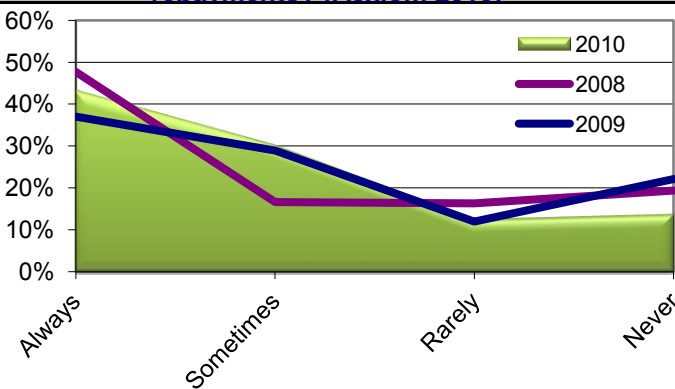
Internet Connection (Acxiom 2010)



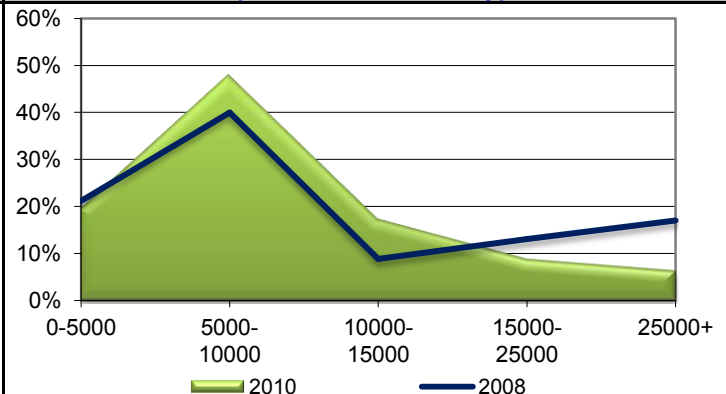
Household Income (Acxiom 2010)



Is the Credit Card Repaid Monthly and difficulty with repayments? (Acxiom 2010)



Household main car mileage by 1000s? (Acxiom 2010 Survey)

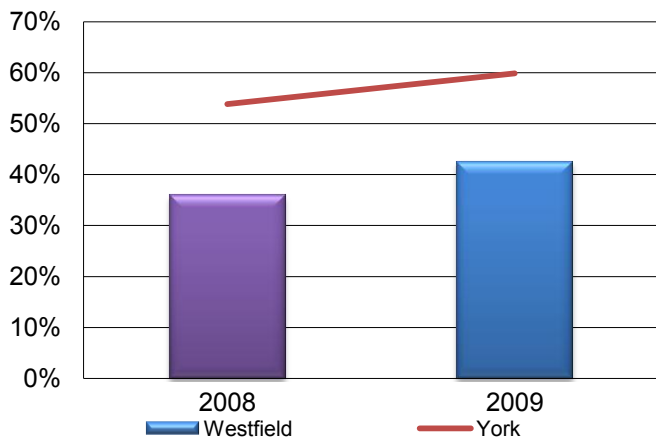


What is this saying about the Economics of Westfield ward?

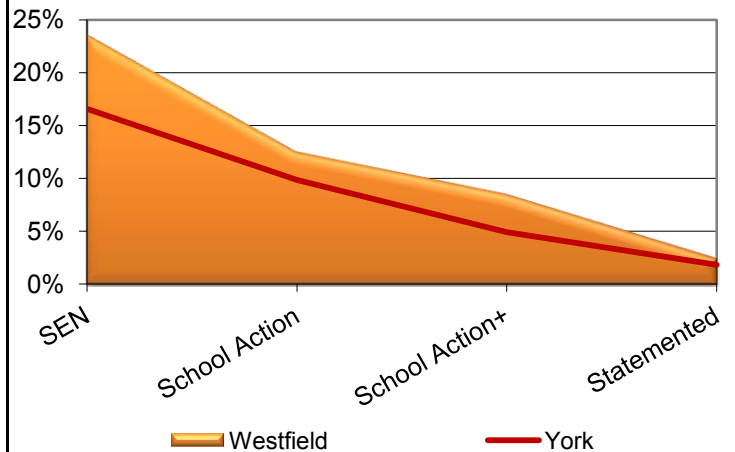
Education and Learning in Westfield Ward

Annex C

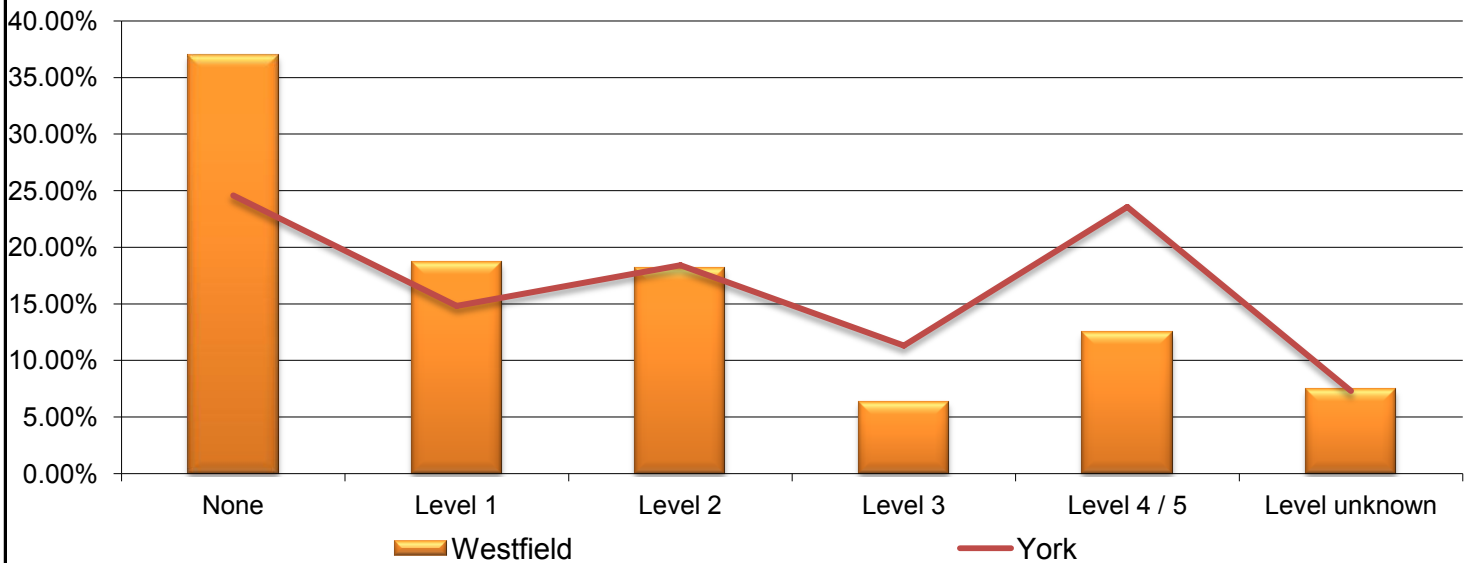
**Pupil Results (those Attending York LA Schools)
GCSE - at least 5 A-Cs inc Math and English (09/10)**



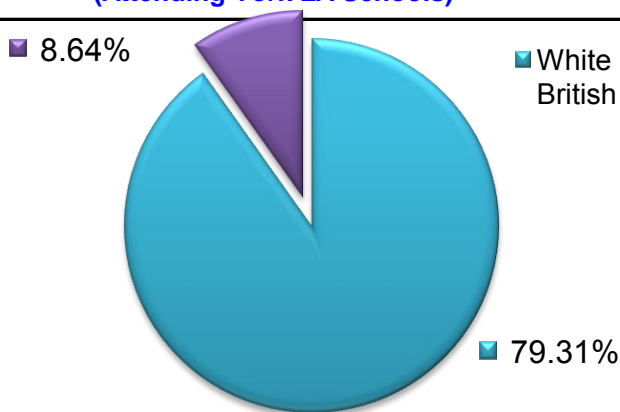
Special Education Need (2010)



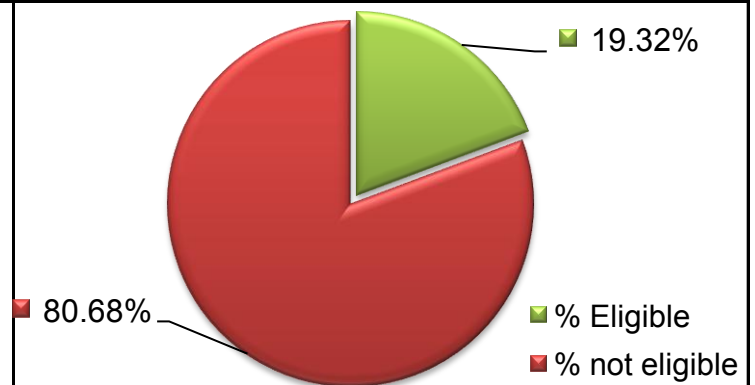
Qualifications 2001 Census



**Ethnicity of Pupils (2010)
(Attending York LA Schools)**

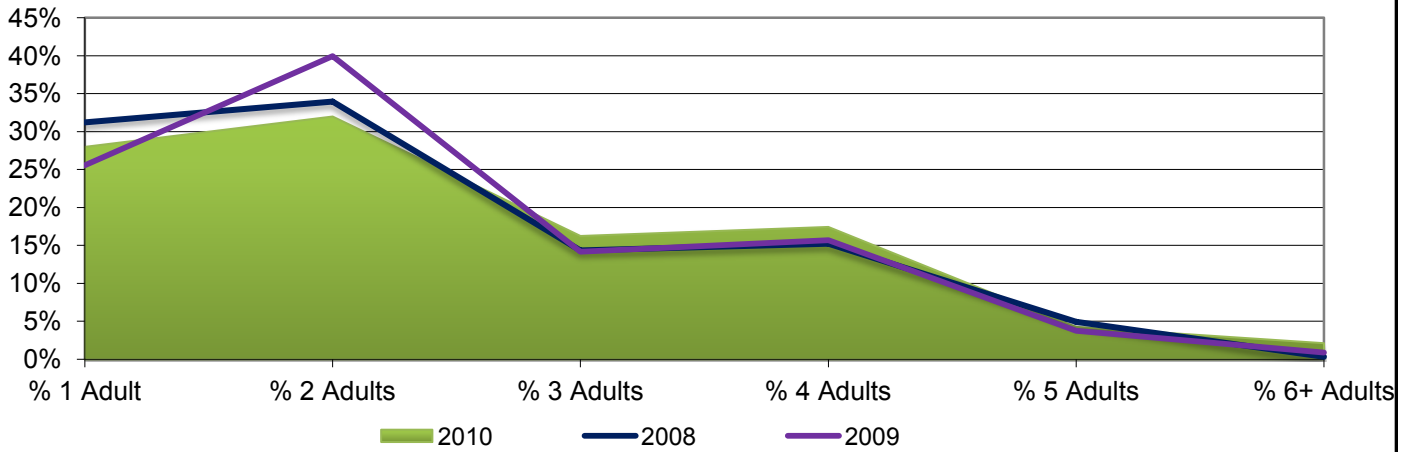


**% of Pupils Eligible for FSM (2010)
(Attending York LA Schools)**

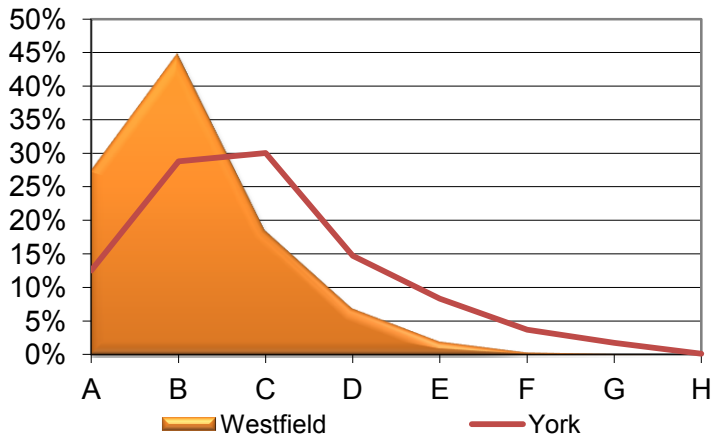


What is this saying about Education and Learning of Westfield ward?

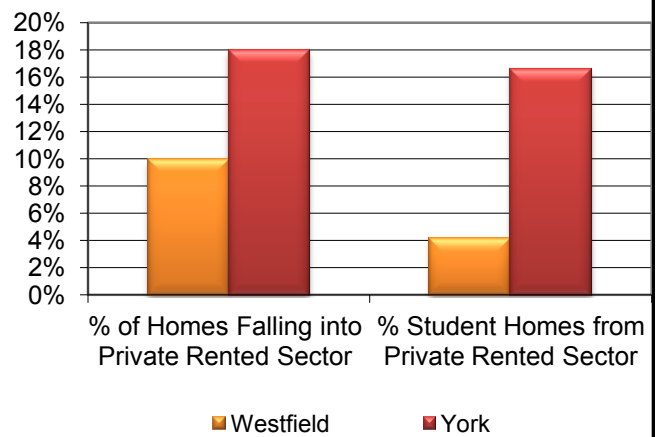
Number of Residents per Household (Acxiom 2009 Survey)



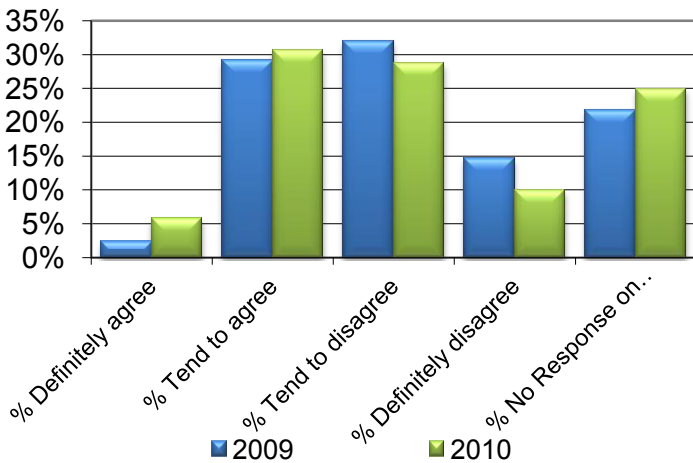
Council Tax Bandings (% of houses within ward - 2010)



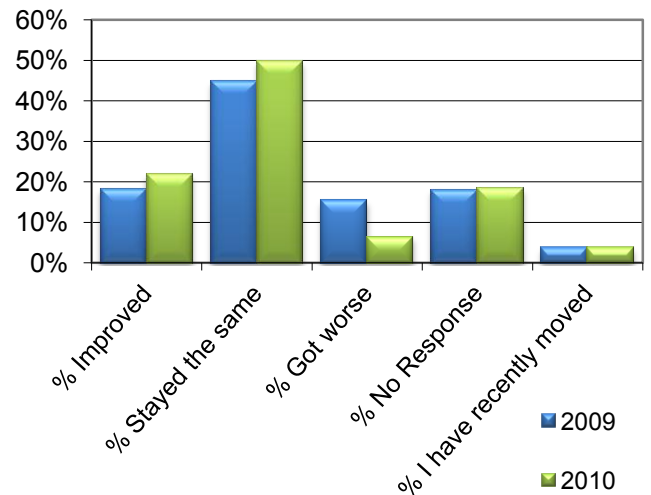
Private rented and student homes (2010)



Can influence local area decisions? (Acxiom 2009 Survey)



In last 3 years my neighbourhood has? (Acxiom 2009 Survey)



What is this saying about the housing and neighbourhood of Westfield ward?

Glossary

Annex C

Acxiom Customer Survey 2009	The Acxiom Customer Survey 2009 profiles wards based on a commercial survey. It is a way of profiling the customers of a council in a particular area.	
ASB	Anti Social Behaviour - recorded incidents from 4 areas; Police, YPAL, NYFRS and EPU	
Census	All these indicators come from the 2001 census and therefore may be out of date but have been used where there is no alternative.	
Child Poverty	Number of children living in families in receipt of CTC whose reported income is less than 60 per cent of the median income or in receipt of IS or (Income-Based) JSA, divided by the total number of children in the area (determined by Child Benefit data)	
D.O.T.	Direction of Travel - whether the indicator has moved up or down since the last available update/release.	
DWP	Department for Work and Pensions	
EPU	Environmental Protection Unit	
Indices of Multiple Deprivation (IMD)	The Index of Multiple Deprivation combines a number of indicators, chosen to cover a range of economic, social and housing issues, into a single deprivation score for each small area in England. The Indices are used widely to analyse patterns of deprivation, identify areas that would benefit from special initiatives or programmes and as a tool to determine eligibility for specific funding streams.	
	Crime	This domain measures the rate of recorded crime for four major crime types, representing the risk of personal and material victimisation at a small area level.
	Employment	This domain measures employment deprivation conceptualised as involuntary exclusion of the working age population from the labour market.
	Income	The purpose of this domain is to capture the proportion of the population, and their income levels.
	Health and Disability	This domain measures rates of poor health, early mortality and disability in an area and covers the entire age range.
	Education and Skills	This domain captures the extent of deprivation in terms of education, skills and training in a local area. The indicators are structured into two sub domains: one relating to education deprivation for children/young people in the area, and one relating to lack of skills and qualifications among a subset of the working age adult population.
	Barriers to Housing	The purpose of this domain is to measure barriers to housing and key local services. The indicators are structured into two sub-domains: 'geographical barriers', and 'wider barriers' which includes issues relating to access to housing, such as affordability.
	Living Environment	This domain focuses on deprivation with respect to the characteristics of the environment. It comprises two sub-domains: the 'indoors' living environment which measures the quality of housing, and the 'outdoors' living environment which contains two measures about air quality and road traffic accidents.
NOMIS	Nomis is a service provided by the Office for National Statistics, ONS, to give you free access to the most detailed and up-to-date UK labour market	
NYFSP	North Yorkshire Fire and Rescue	
Place Survey	The Place Survey is used to measure how residents experience several aspects of life.	
Out of Work Benefits	Out of Work Benefits covers several categories of benefits including; job seekers, incapacity, lone parent, carer, disabled and bereaved.	
YPAL	York Pride Action Line	

Ward Profiles (not for Public Distribution) - contact Performance and Improvement Team for further information about the profiles.